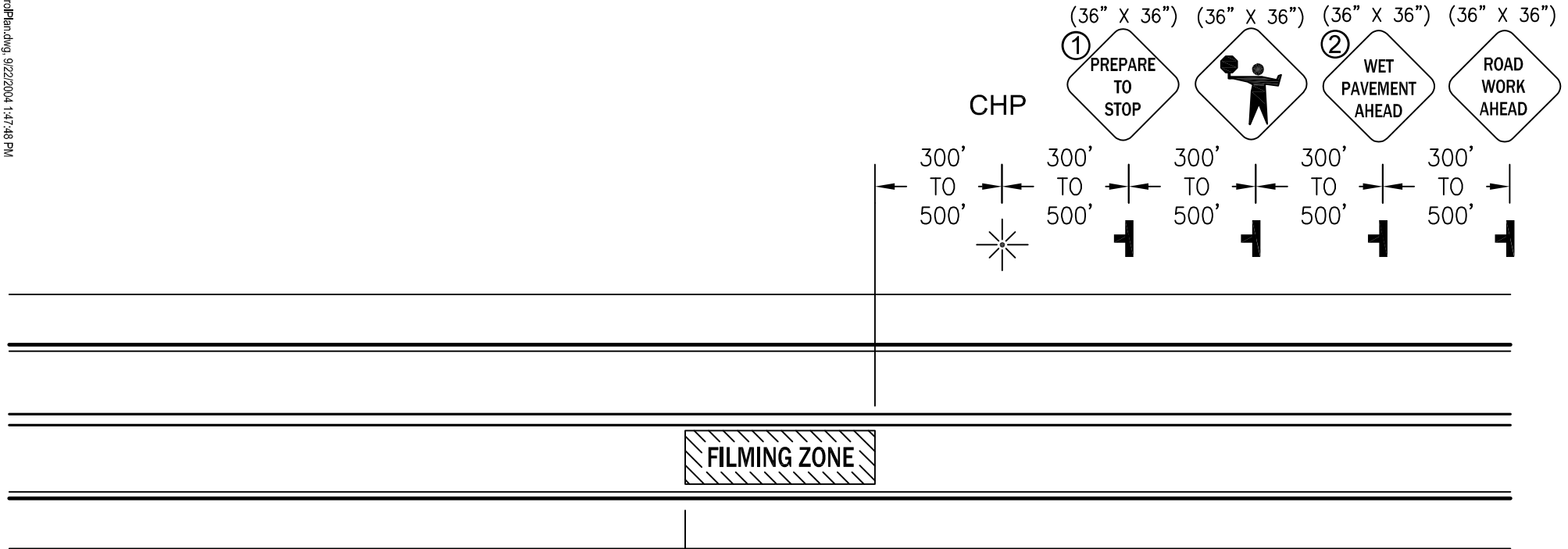
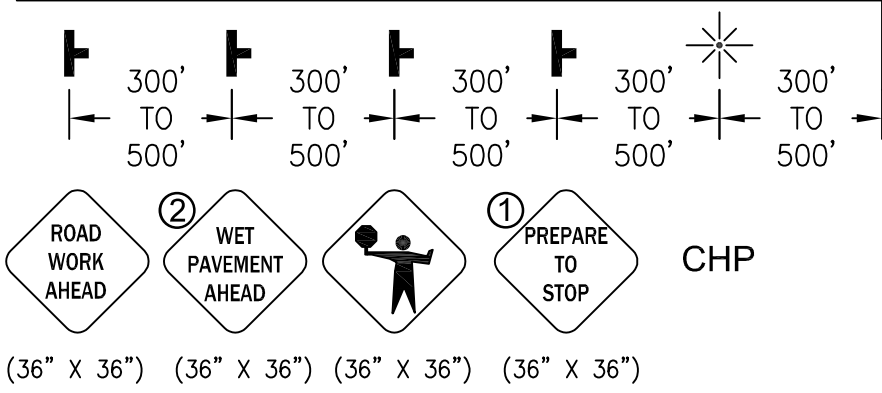


FILMING INTERMITTENT TRAFFIC CONTROL PLAN (THREE MINUTE MAXIMUM DELAY)

(TWO LANE CONVENTIONAL HIGHWAY)



FILMING ZONE



NOTES:

1. PREPARE TO STOP signs are optional if the speed limit < 45 mph.
2. WET PAVEMENT AHEAD signs are only required when pavement wet downs are included in the permit.
3. The number of CHP Officers required may be reduced if specified in the permit. If one Officer is specified, the filming zone length cannot exceed 100 feet.
4. The advance notification sign is not shown but shall be placed preceding the ROAD WORK AHEAD sign in each direction, at least 24 hours prior to filming (see Film Standard Condition #5).
5. Traffic delays shall not be longer than three (3) minutes.

10/17/18